



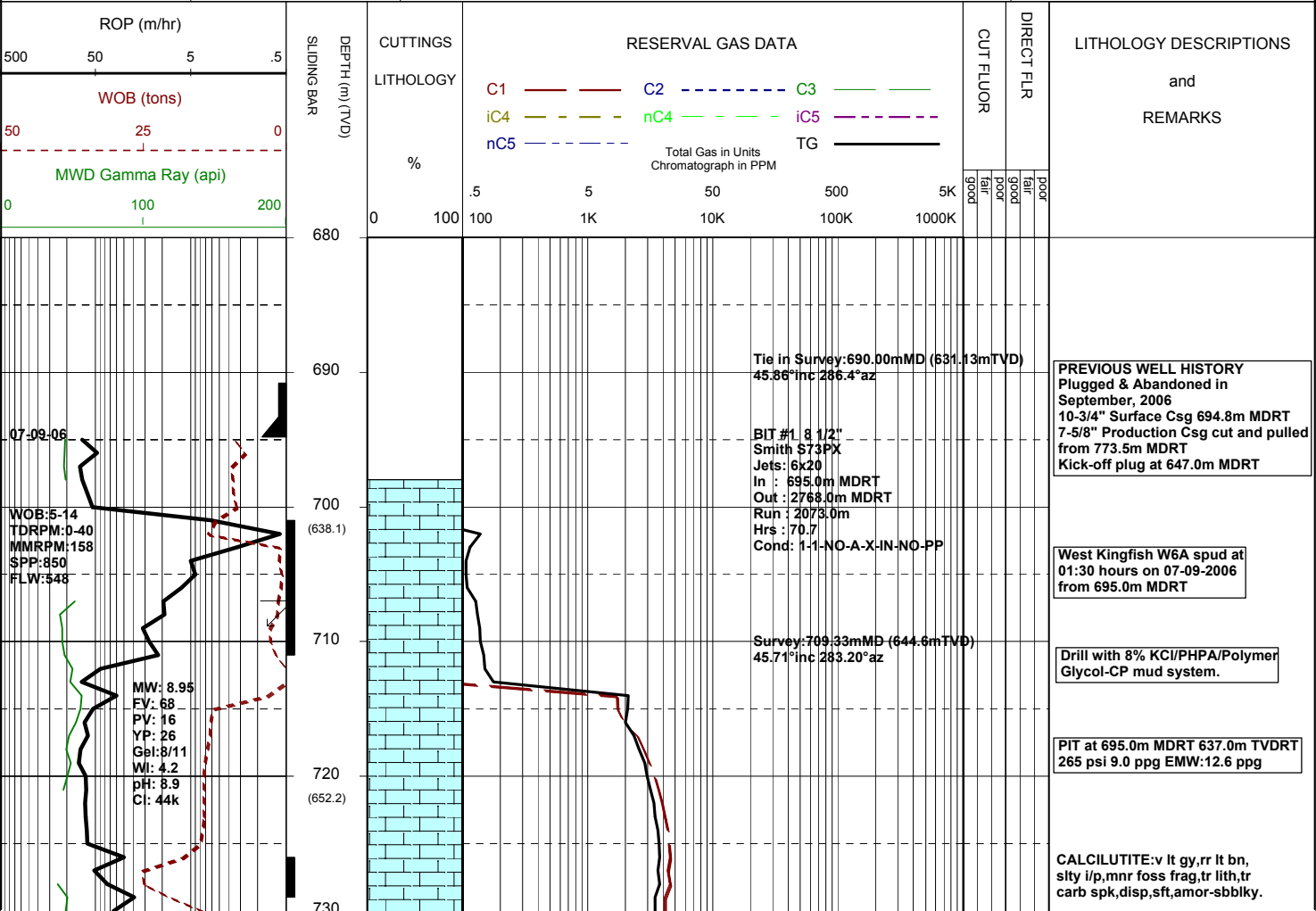
# MASTERLOG

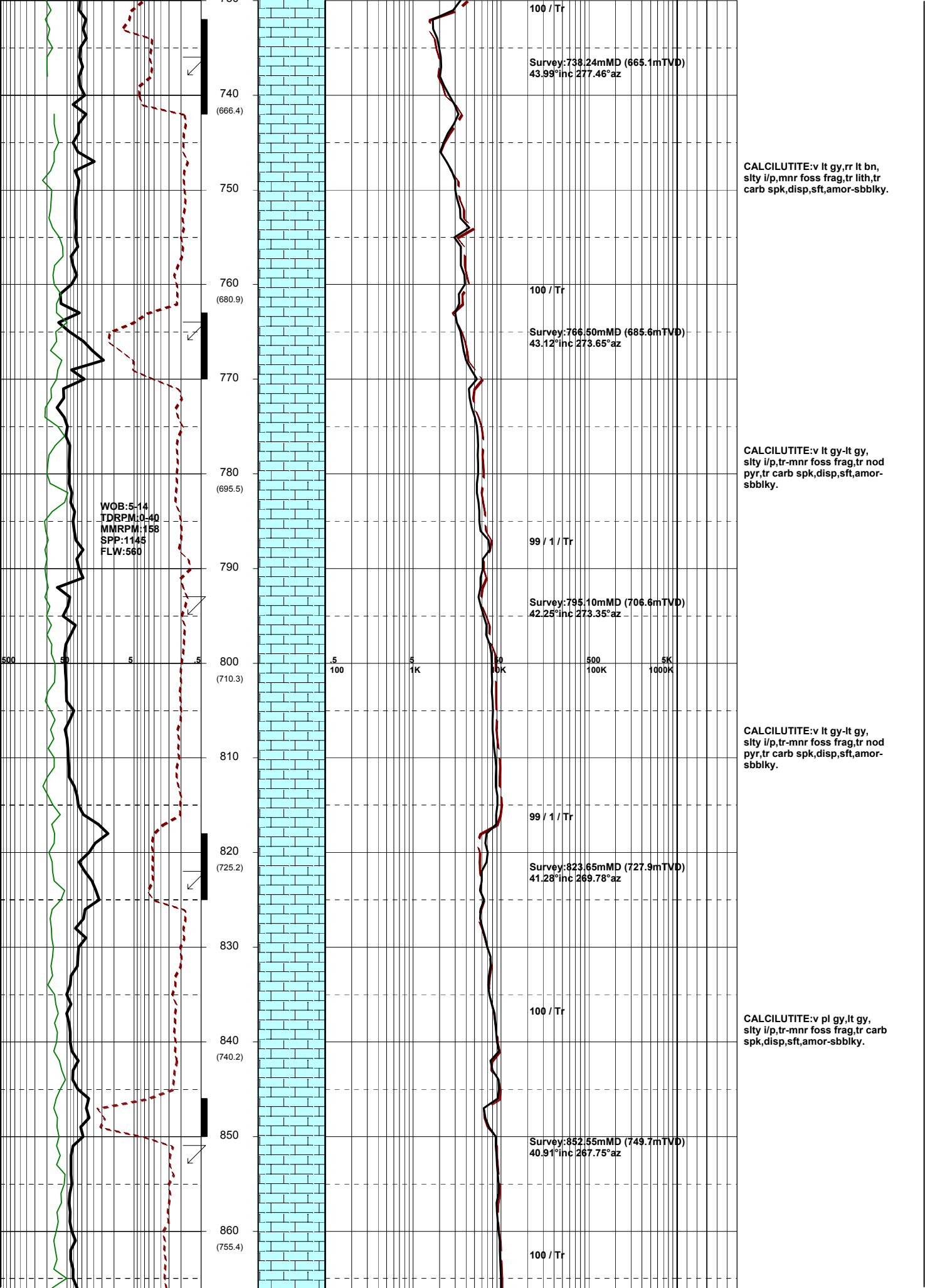
## WKF-W6A



GENERAL	SURFACE POSITION	HOLE / CASING INFO	DATE / DEPTH	ENGINEERS
Country : AUSTRALIA	Longitude : 148 06 19.764E	8-1/2" Hole to 3477.0m MDRT	Spud Date : 07-09-2006	Steve Oades Mark Smith Nick Abolins
Permit : VIC L8	Latitude : 38 35 34.706S		Total Depth Date : 17-09-2006	
Field : Kingfish	MGA Co-ord X : 596273.69mE	10-3/4" Csg Shoe at 694.8m MDRT	Total Depth : 3477.0m MDRT	
Basin : GIPPSLAND	MGA Co-ord Y : 5727810.57mN	7" Production Csg at	True Vertical Depth : 2371.1m TVDRT	
Well Type : DEVELOPMENT	RT to MSL : 33.43m		Log Scale : 1/ 500	
Rig Name : NABORS 453	RT to Sea Bed : 109.56m			

ABBREVIATIONS	LITHOLOGY LEGEND	ENGINEERING LEGEND
MW Mud Weight WOB Weight on Bit (klbs) RV Funnel Viscosity RPM Rotations Per Min PV Plastic Viscosity FLW Flow Rate (gpm) YP Yield Point SPP Pump Pressure (psi) Gel Gel Strength RR Re-Run Bit WL Water Loss TG Trip Gas KCI Potassium Chloride CG Connection Gas Cl Chlorides BG Background Gas Incl Inclination DGP Drilled Gas Peak Az Azimuth MM Mud Motor	CLAYSTONE SILTSTONE SANDSTONE SHALE CONGLOMERATE COAL MARL LIMESTONE DOLOMITE CHERT	CASING SHOE LINER HANGER BIT CHANGE DEVIA. SURVEY SWC UNRECOV SIDEWALL CORE CORE WIRELINE LOGS MDT POINTS: PRESSURE ONLY SAMPLE SEAL FAILURE TIGHT SLIDING



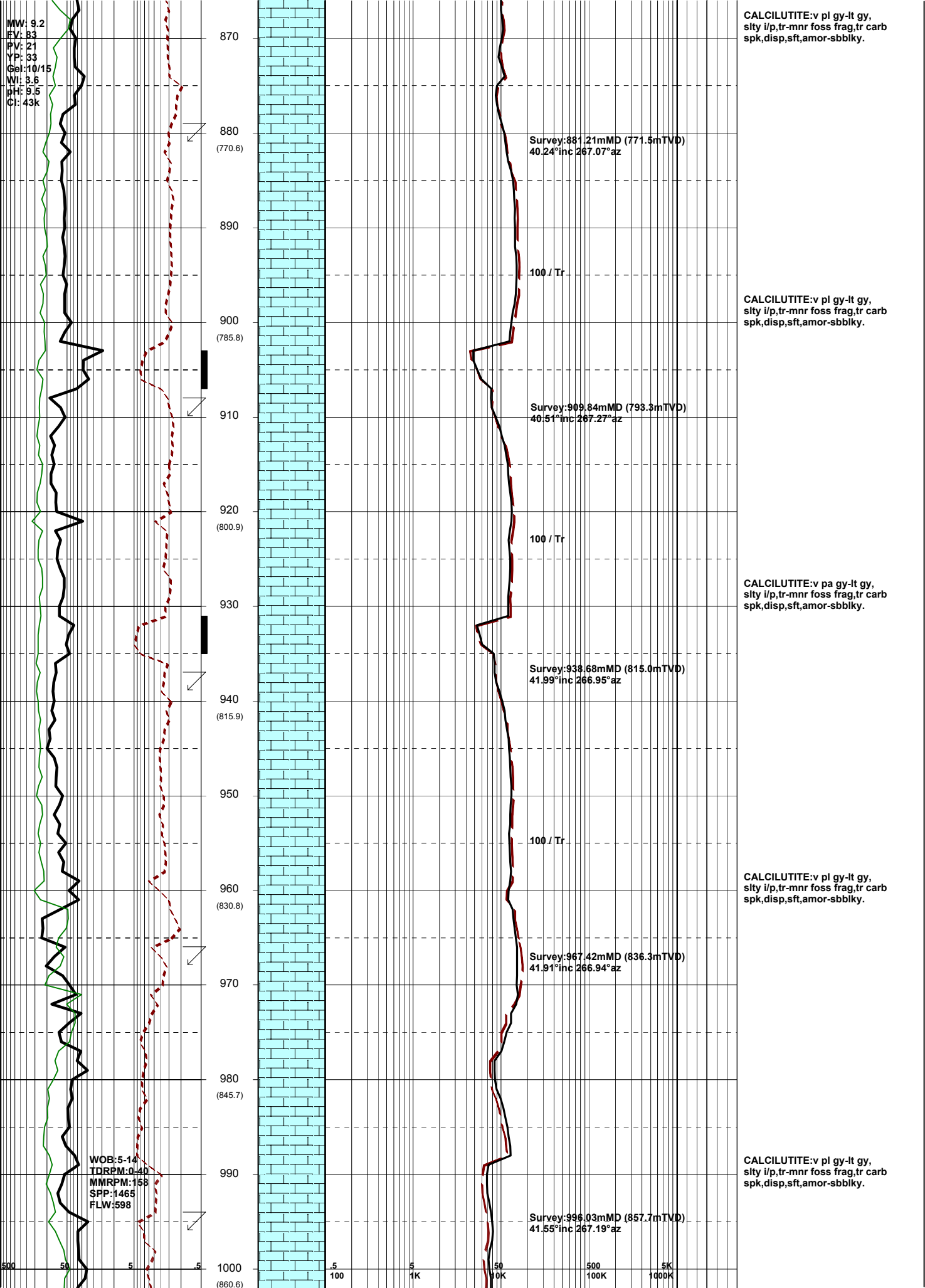


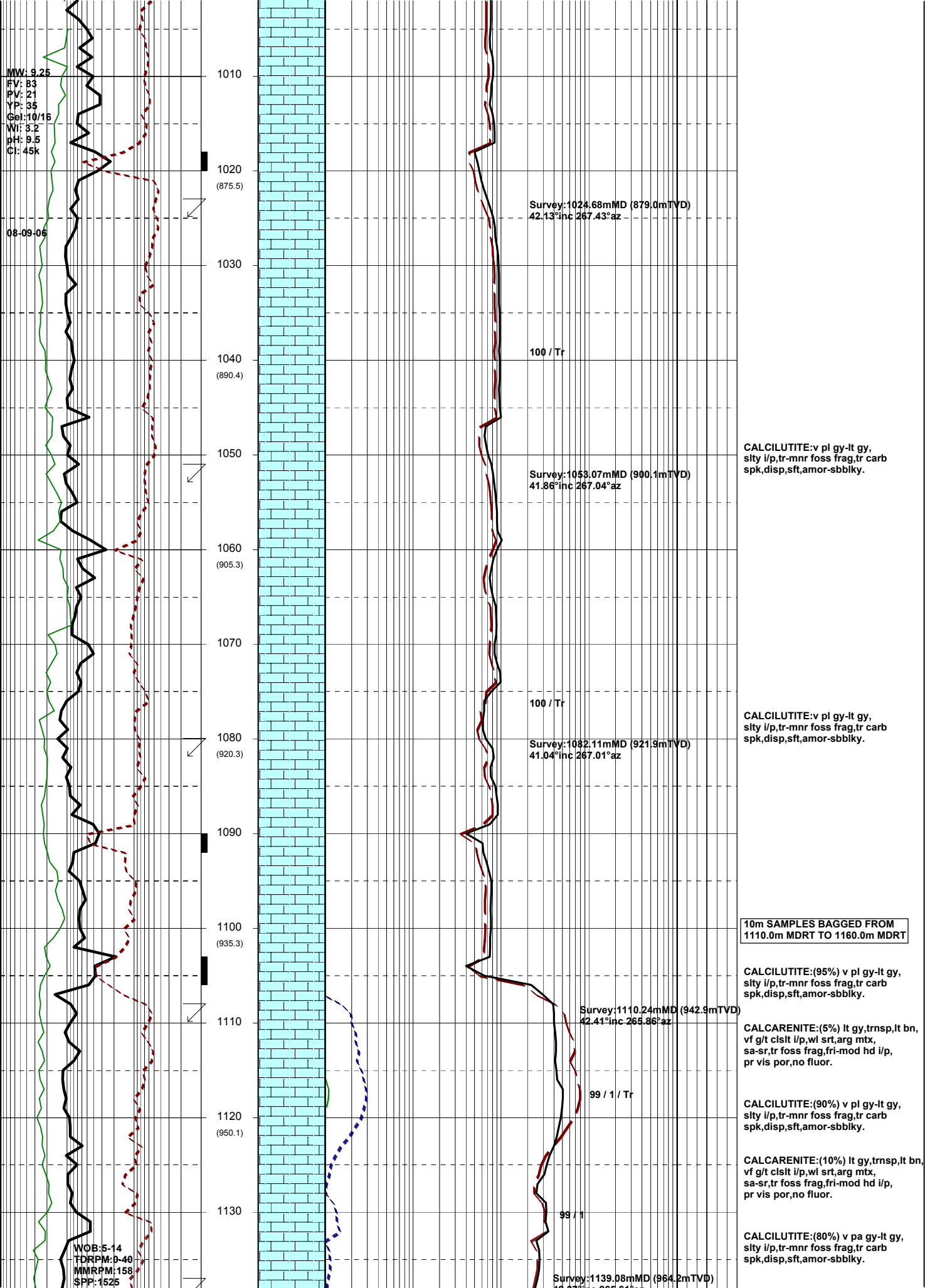
CALCILUTITE: v lt gy, rr lt bn, sily i/p, mnr foss frag, tr lith, tr carb spk, disp, sft, amor-sbbiky.

CALCILUTITE: v lt gy-lt gy, sily i/p, tr-mnr foss frag, tr nod pyr, tr carb spk, disp, sft, amor-sbbiky.

CALCILUTITE: v lt gy-lt gy, sily i/p, tr-mnr foss frag, tr nod pyr, tr carb spk, disp, sft, amor-sbbiky.

CALCILUTITE: v pl gy, lt gy, sily i/p, tr-mnr foss frag, tr carb spk, disp, sft, amor-sbbiky.





MW: 9.25  
 FV: 83  
 PV: 21  
 YP: 35  
 Gel: 10/16  
 WI: 3.2  
 pH: 9.5  
 CI: 45k

08-09-06

WOB-5-14  
 TDRPM: 9-46  
 MMRPM: 158  
 SPP: 1525

1010  
 1020 (875.5)  
 1030  
 1040 (890.4)  
 1050  
 1060 (905.3)  
 1070  
 1080 (920.3)  
 1090  
 1100 (935.3)  
 1110  
 1120 (950.1)  
 1130

Survey: 1024.68mMD (879.0mTVD)  
 42.13° inc 267.43° az

100 / Tr

Survey: 1053.07mMD (900.1mTVD)  
 41.86° inc 267.04° az

100 / Tr

Survey: 1082.11mMD (921.9mTVD)  
 41.04° inc 267.01° az

CALCILUTITE: v pl gy-lt gy,  
 silty i/p, tr-mnr foss frag, tr carb  
 spk, disp, sft, amor-sbbiky.

CALCILUTITE: v pl gy-lt gy,  
 silty i/p, tr-mnr foss frag, tr carb  
 spk, disp, sft, amor-sbbiky.

10m SAMPLES BAGGED FROM  
 1110.0m MDRT TO 1160.0m MDRT

CALCILUTITE: (95%) v pl gy-lt gy,  
 silty i/p, tr-mnr foss frag, tr carb  
 spk, disp, sft, amor-sbbiky.

CALCARENITE: (5%) lt gy, trnsp, lt bn,  
 vf g/t clst i/p, wl srt, arg mtx,  
 sa-sr, tr foss frag, fri-mod hd i/p,  
 pr vis por, no fluor.

CALCILUTITE: (90%) v pl gy-lt gy,  
 silty i/p, tr-mnr foss frag, tr carb  
 spk, disp, sft, amor-sbbiky.

CALCARENITE: (10%) lt gy, trnsp, lt bn,  
 vf g/t clst i/p, wl srt, arg mtx,  
 sa-sr, tr foss frag, fri-mod hd i/p,  
 pr vis por, no fluor.

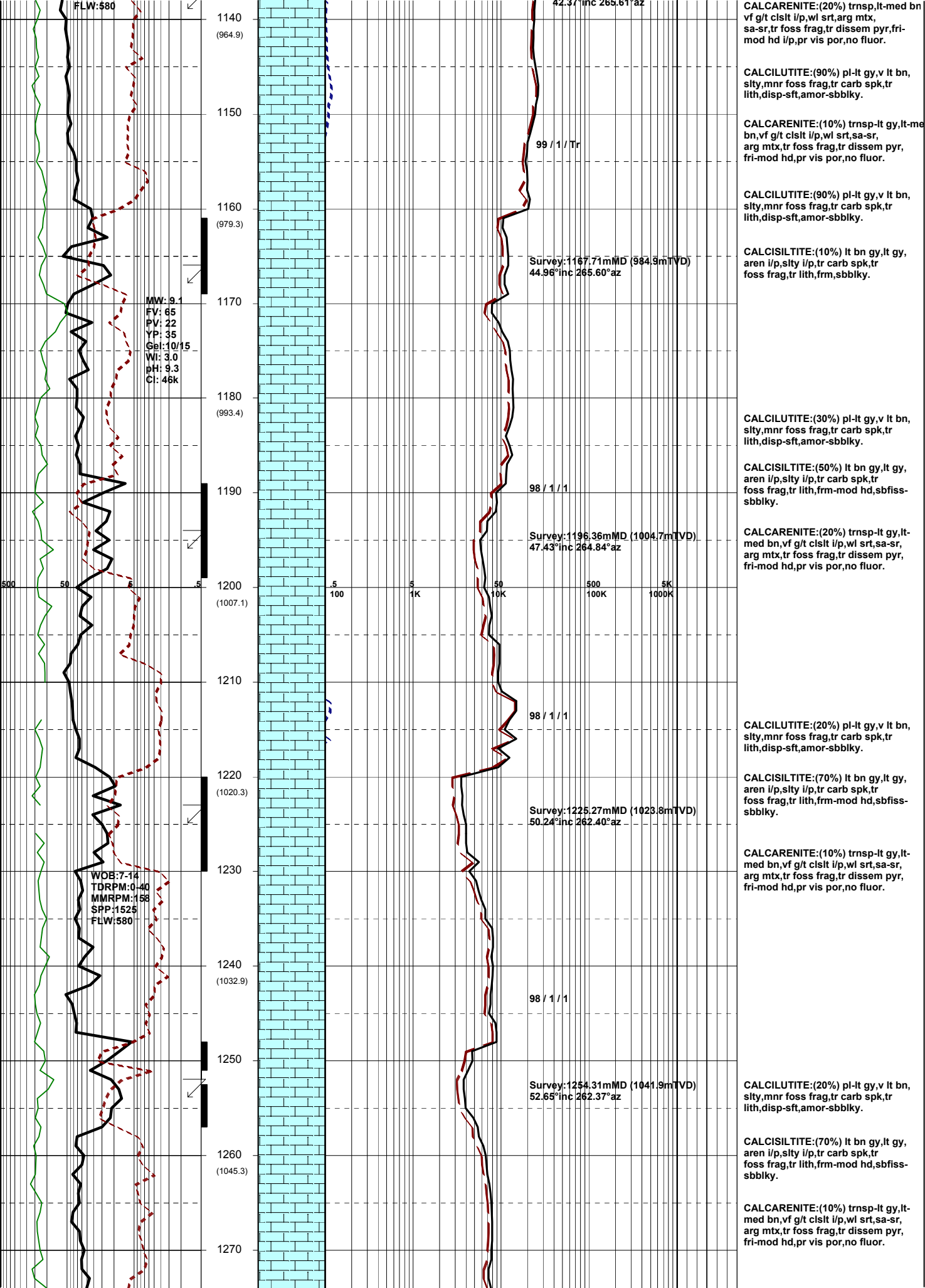
CALCILUTITE: (80%) v pa gy-lt gy,  
 silty i/p, tr-mnr foss frag, tr carb  
 spk, disp, sft, amor-sbbiky.

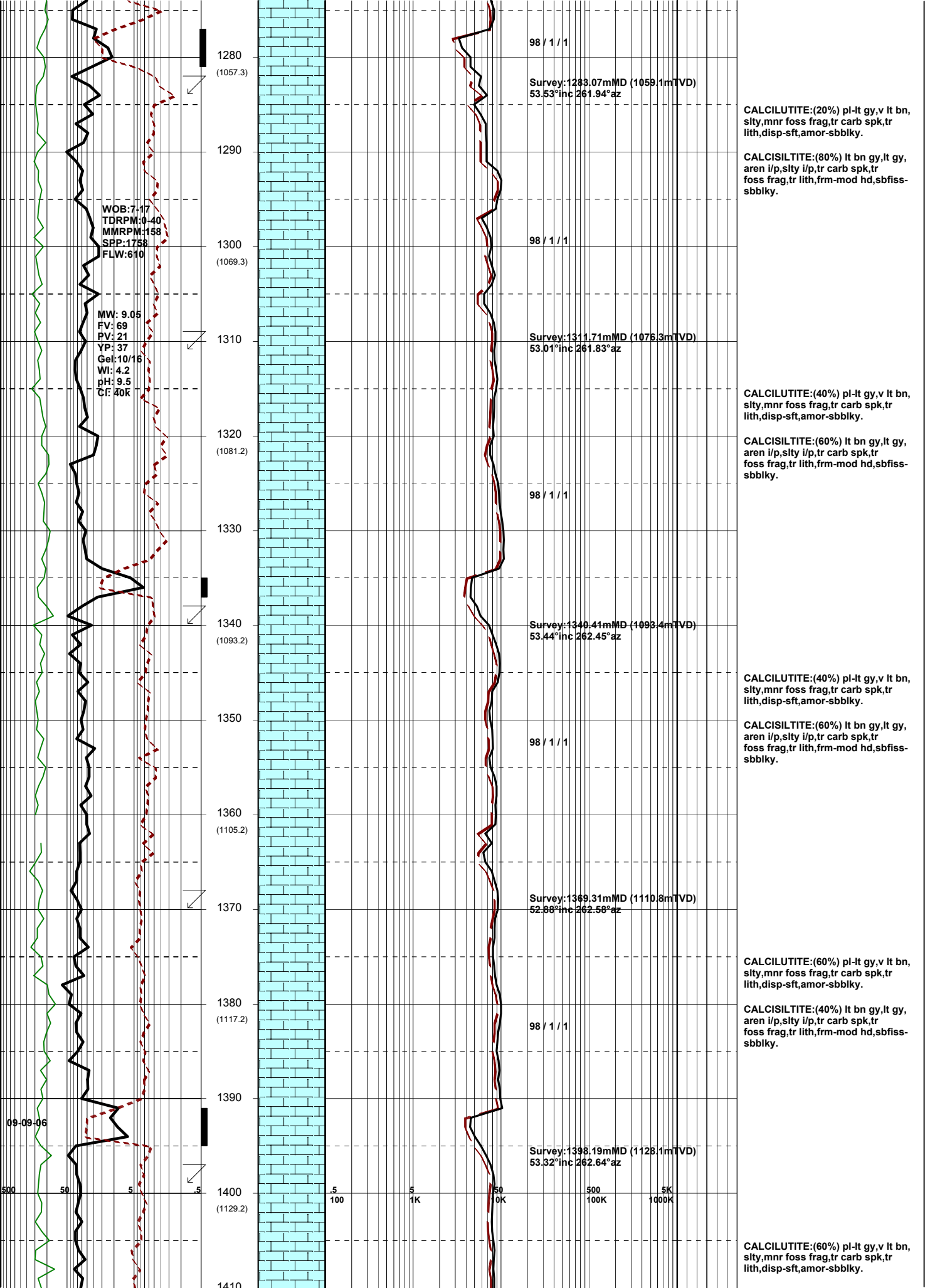
Survey: 1110.24mMD (942.9mTVD)  
 42.41° inc 265.86° az

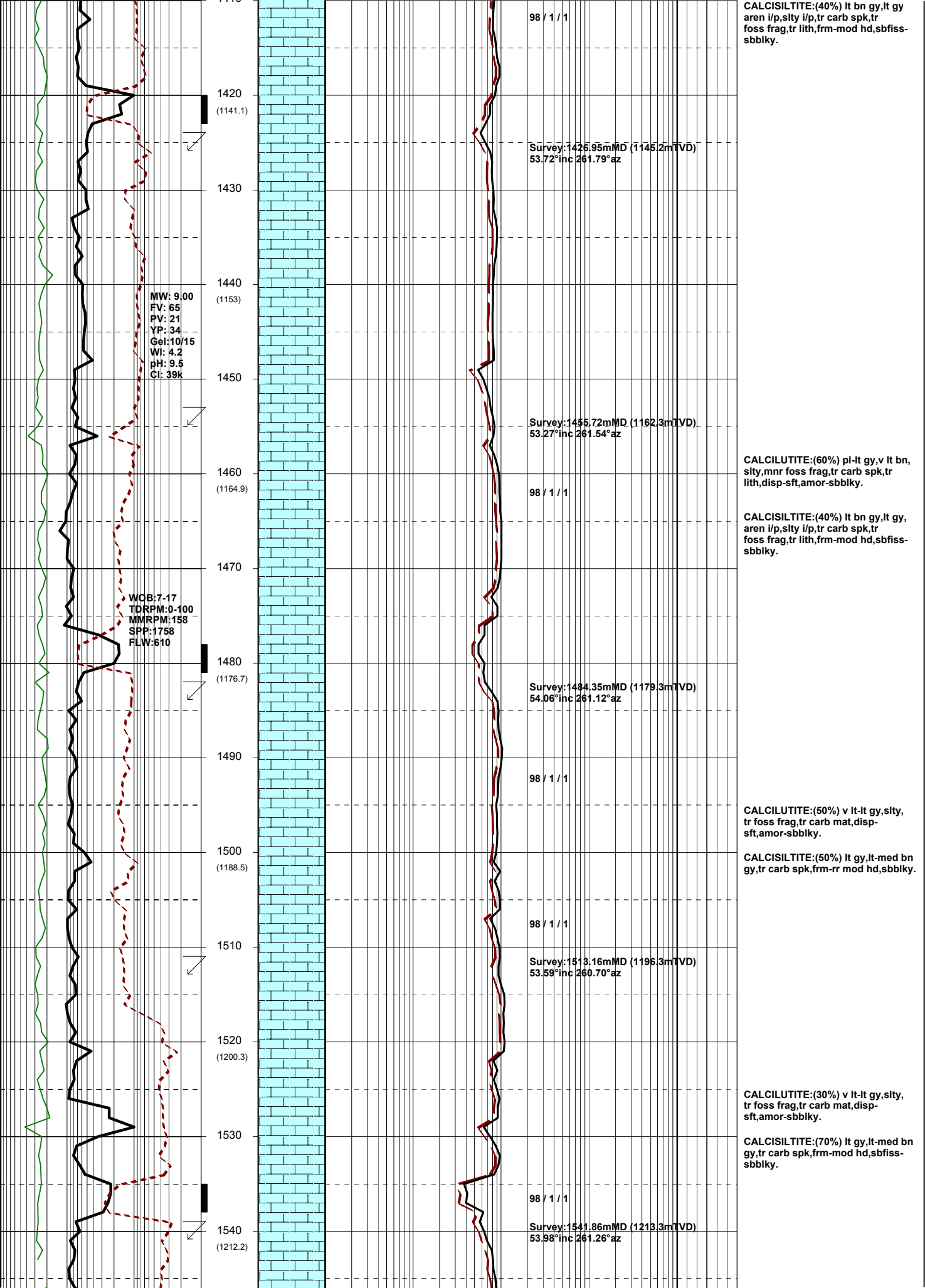
99 / 1 / Tr

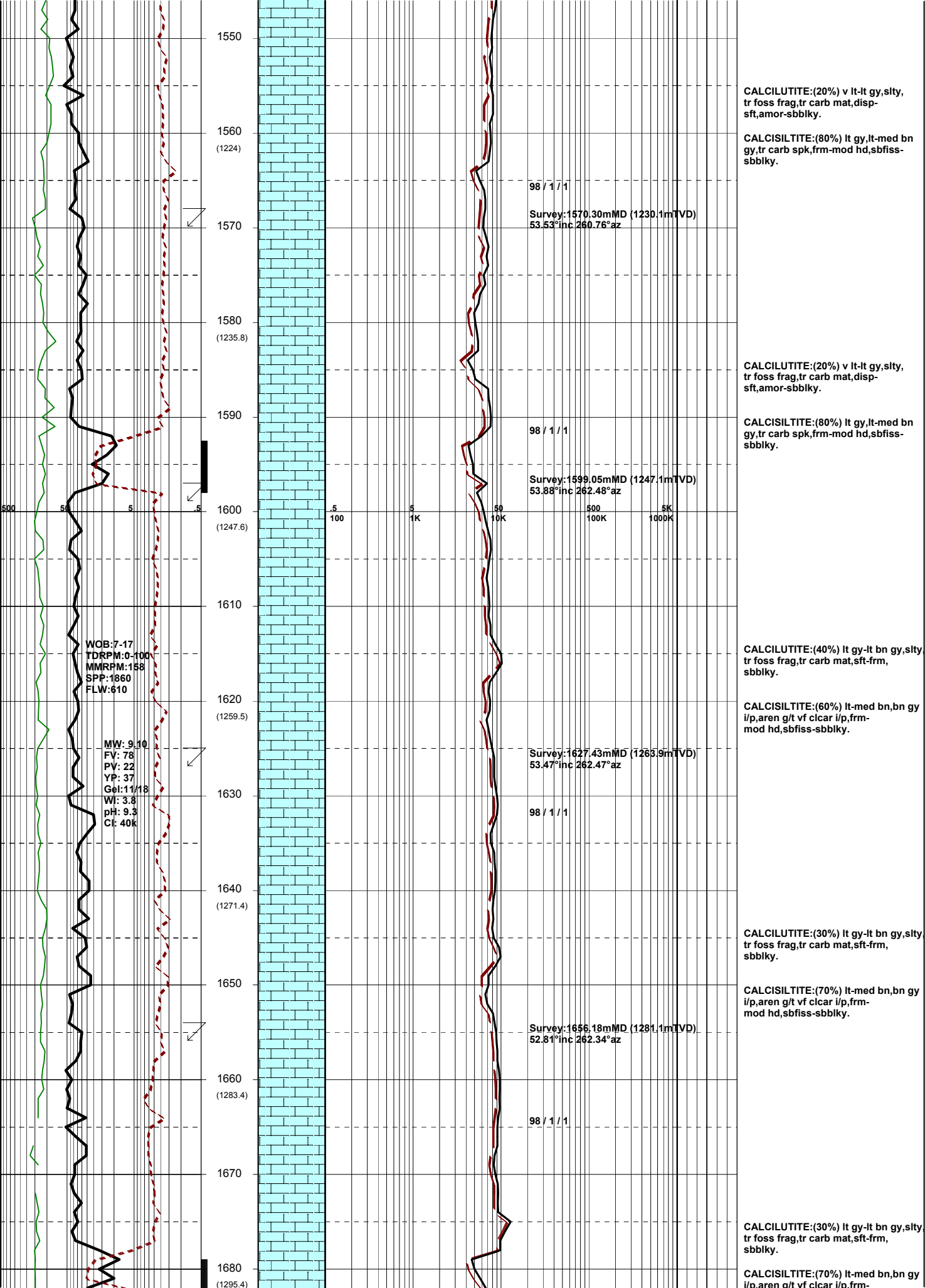
Survey: 1139.08mMD (964.2mTVD)

99 / 1









CALCILUTITE:(20%) v lt-ly gy, slty, tr foss frag, tr carb mat, disp-sft, amor-sbbkly.

CALCISILTITE:(80%) lt gy, lt-med bn gy, tr carb spk, frm-mod hd, sbfiss-sbbkly.

CALCILUTITE:(20%) v lt-ly gy, slty, tr foss frag, tr carb mat, disp-sft, amor-sbbkly.

CALCISILTITE:(80%) lt gy, lt-med bn gy, tr carb spk, frm-mod hd, sbfiss-sbbkly.

CALCILUTITE:(40%) lt gy-ly bn gy, slty, tr foss frag, tr carb mat, sft-frm, sbbkly.

CALCISILTITE:(60%) lt-med bn, bn gy i/p, aren g/t vf clcar i/p, frm-mod hd, sbfiss-sbbkly.

CALCILUTITE:(30%) lt gy-ly bn gy, slty, tr foss frag, tr carb mat, sft-frm, sbbkly.

CALCISILTITE:(70%) lt-med bn, bn gy i/p, aren g/t vf clcar i/p, frm-mod hd, sbfiss-sbbkly.

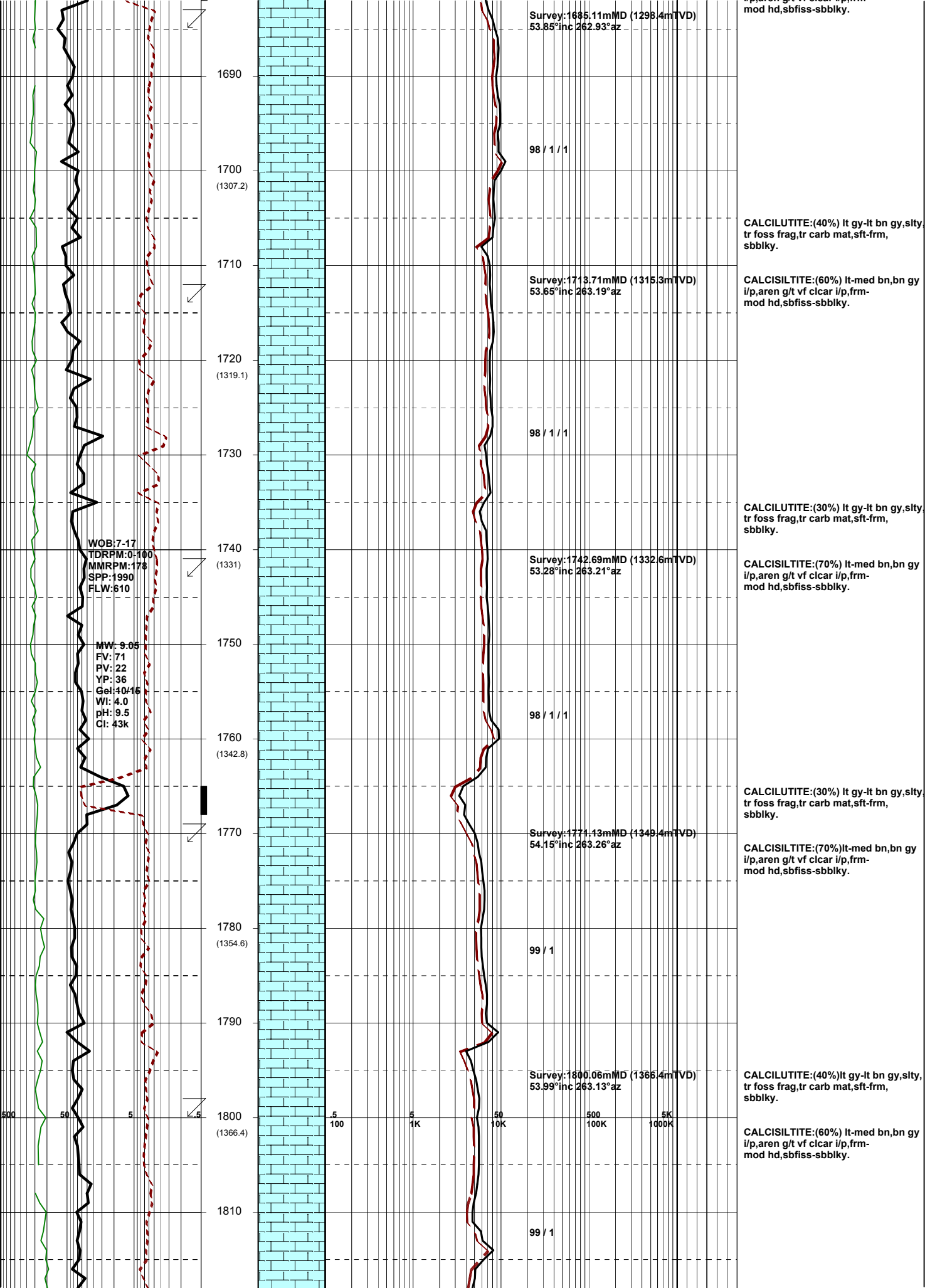
CALCILUTITE:(30%) lt gy-ly bn gy, slty, tr foss frag, tr carb mat, sft-frm, sbbkly.

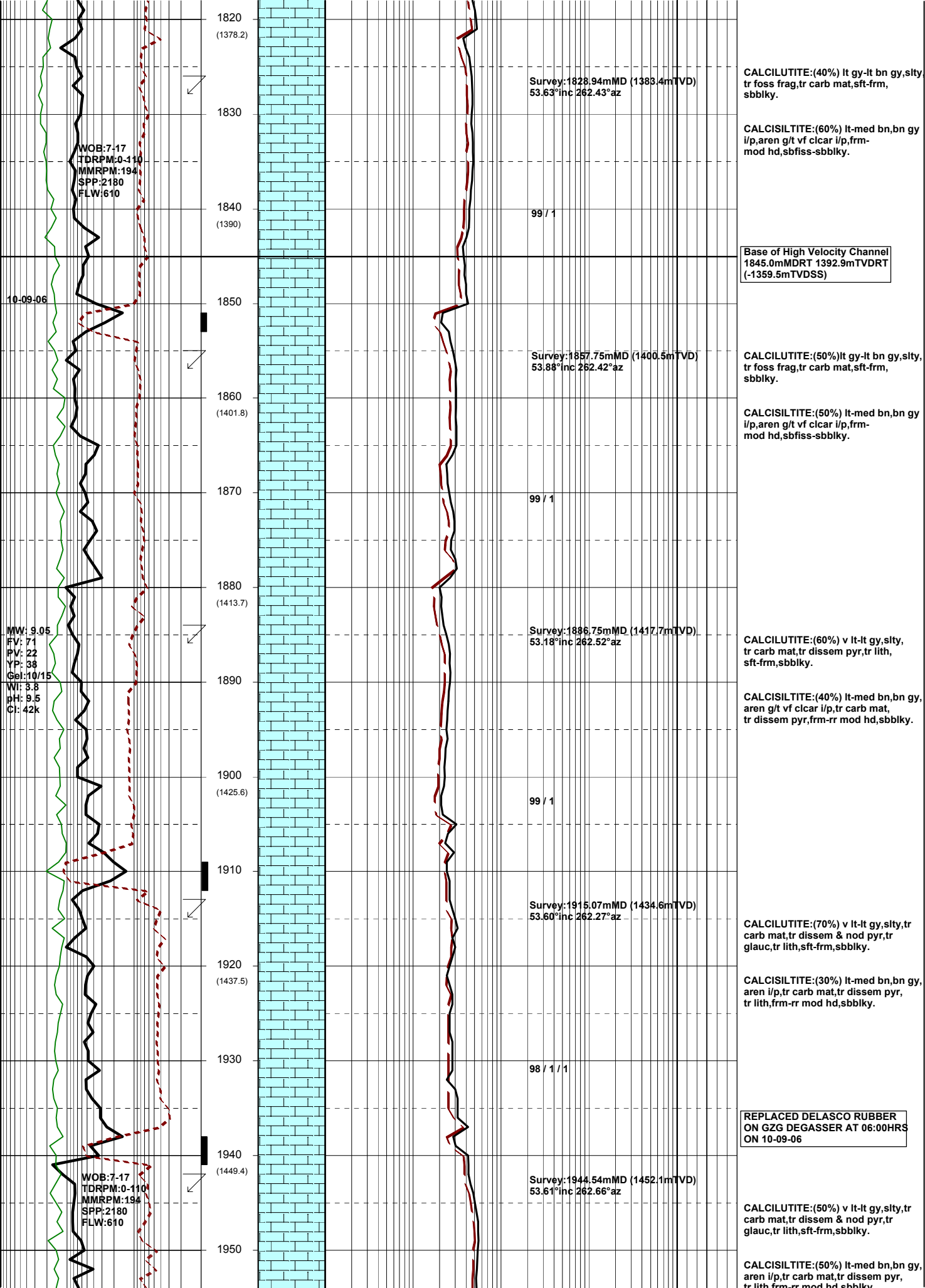
CALCISILTITE:(70%) lt-med bn, bn gy i/p, aren g/t vf clcar i/p, frm-

WOB: 7-17  
TDRPM: 0-100  
MMRPM: 158  
SPP: 1860  
FLW: 610

MW: 9.10  
FV: 78  
PV: 22  
YP: 37  
Gel: 11/18  
WI: 3.8  
pH: 9.3  
Cl: 40k





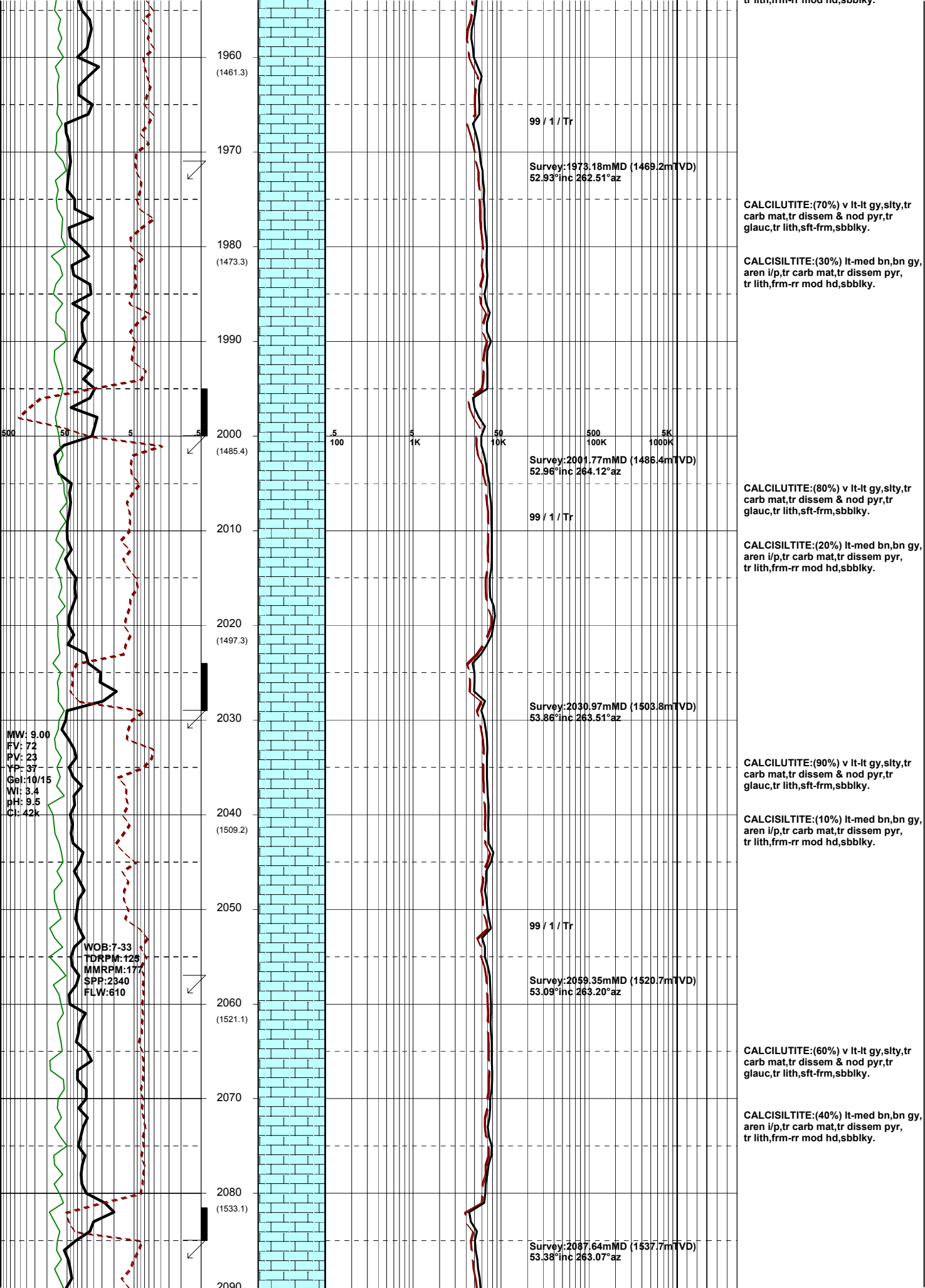


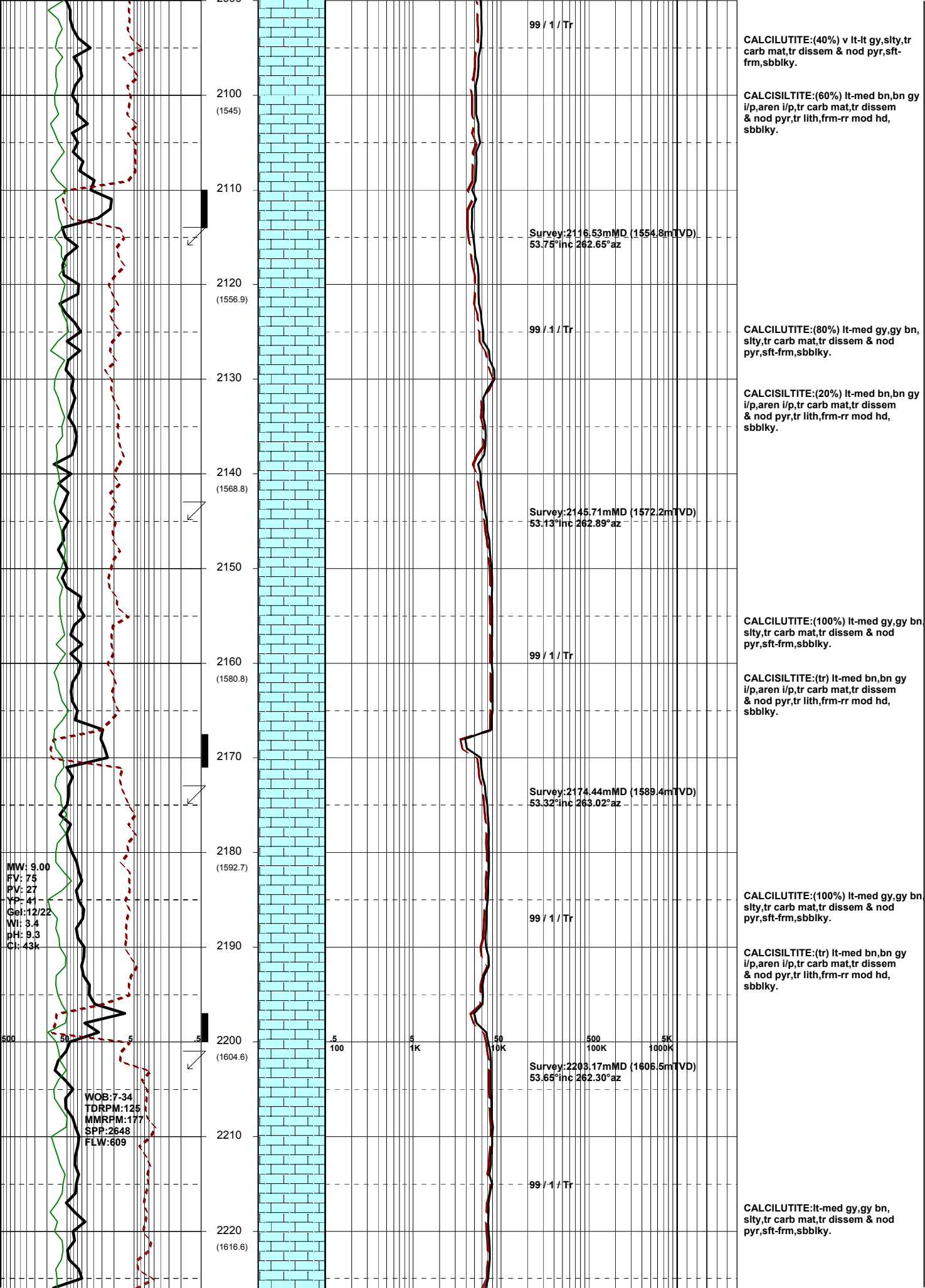
WOB:7-17  
TORPM:0-110  
MMRPM:194  
SPP:2180  
FLW:610

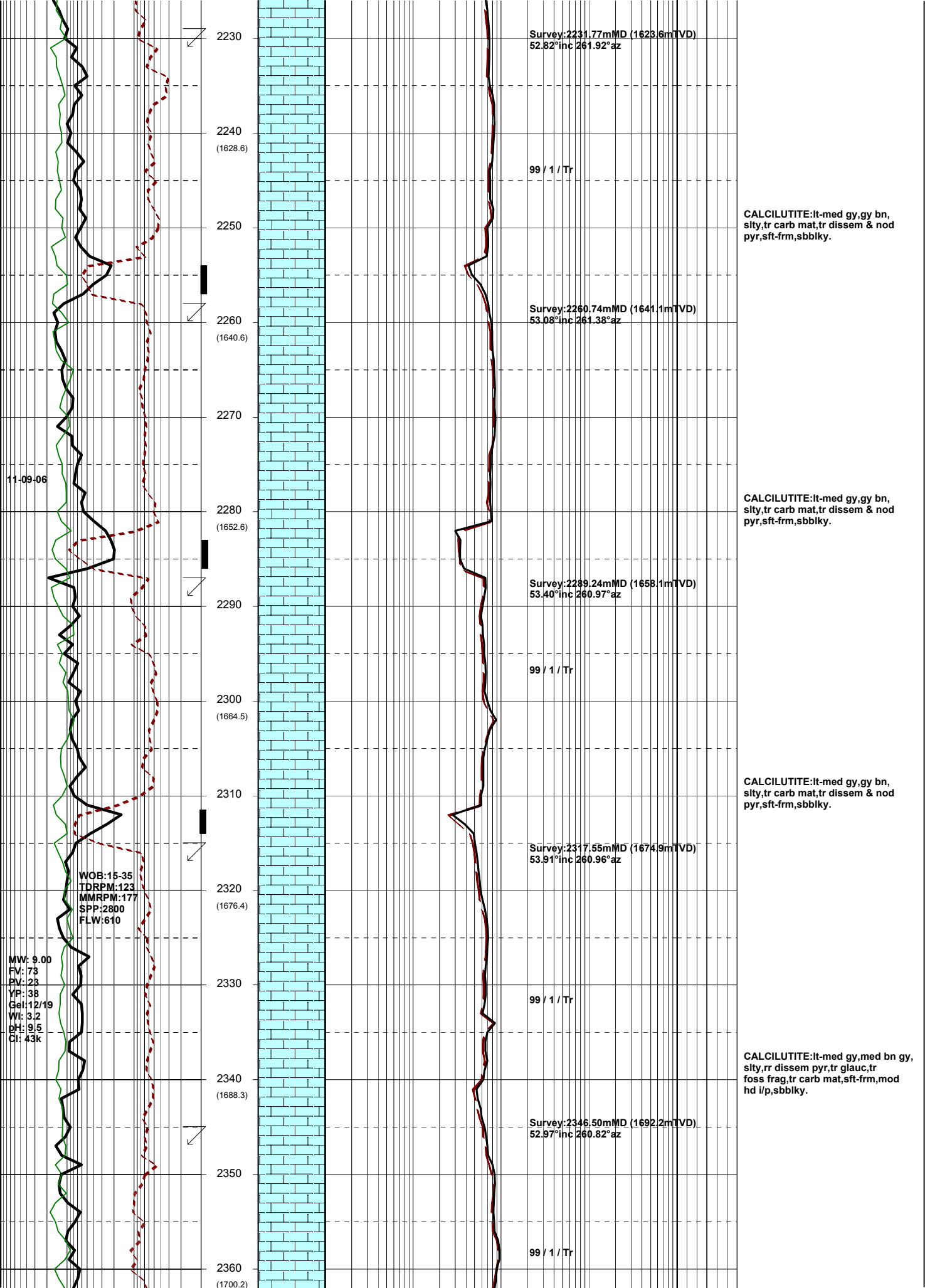
10-09-06

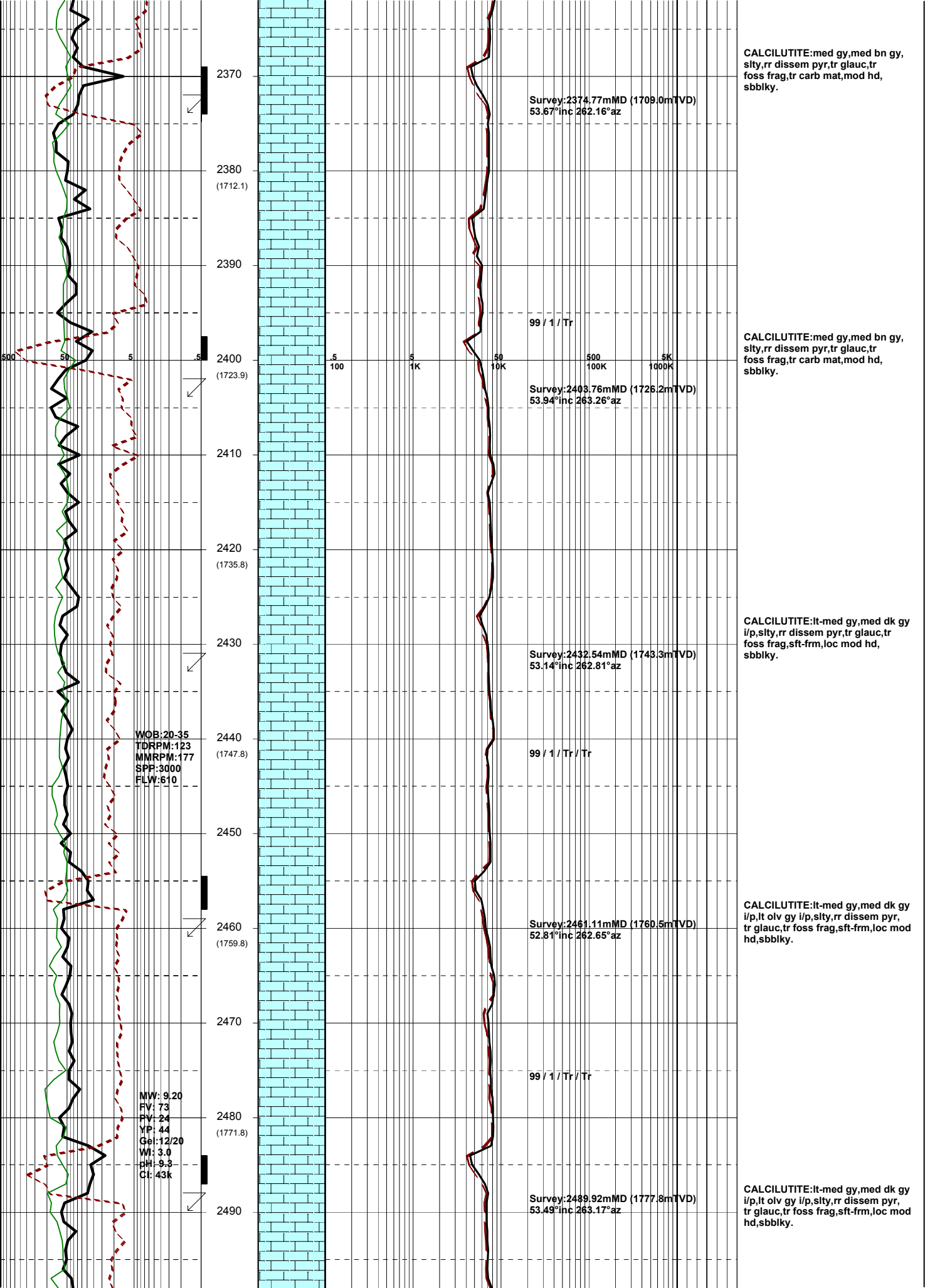
MW: 9.05  
FV: 71  
PV: 22  
YP: 38  
Gel: 10/15  
WI: 3.8  
pH: 9.5  
Cl: 42k

WOB:7-17  
TORPM:0-110  
MMRPM:194  
SPP:2180  
FLW:610









2370  
2380 (1712.1)  
2390  
2400 (1723.9)  
2410  
2420 (1735.8)  
2430  
2440 (1747.8)  
2450  
2460 (1759.8)  
2470  
2480 (1771.8)  
2490

Survey: 2374.77mMD (1709.0mTVD)  
53.67° inc 262.16° az

99 / 1 / Tr

Survey: 2403.76mMD (1726.2mTVD)  
53.94° inc 263.26° az

Survey: 2432.54mMD (1743.3mTVD)  
53.14° inc 262.81° az

99 / 1 / Tr / Tr

Survey: 2461.11mMD (1760.5mTVD)  
52.81° inc 262.65° az

99 / 1 / Tr / Tr

Survey: 2489.92mMD (1777.8mTVD)  
53.49° inc 263.17° az

CALCILUTITE: med gy, med bn gy, slty, rr disse pyr, tr glauc, tr foss frag, tr carb mat, mod hd, sbbiky.

CALCILUTITE: med gy, med bn gy, slty, rr disse pyr, tr glauc, tr foss frag, tr carb mat, mod hd, sbbiky.

CALCILUTITE: lt-med gy, med dk gy i/p, slty, rr disse pyr, tr glauc, tr foss sft frm, loc mod hd, sbbiky.

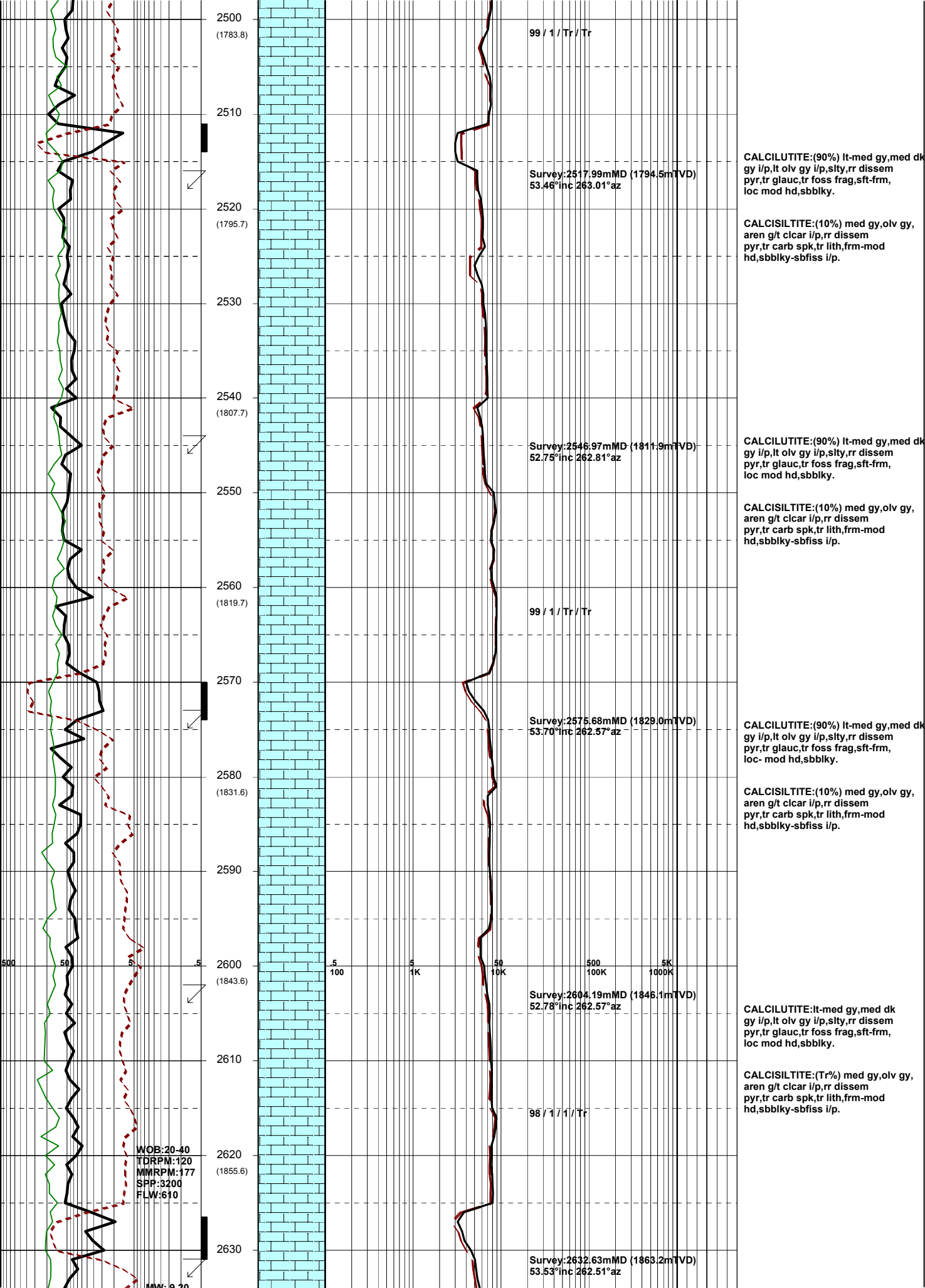
CALCILUTITE: lt-med gy, med dk gy i/p, lt olv gy i/p, slty, rr disse pyr, tr glauc, tr foss frag, sft frm, loc mod hd, sbbiky.

CALCILUTITE: lt-med gy, med dk gy i/p, lt olv gy i/p, slty, rr disse pyr, tr glauc, tr foss frag, sft frm, loc mod hd, sbbiky.

WOB: 20-35  
TDRPM: 123  
MMRPM: 177  
SPP: 3000  
FLW: 610

MW: 9.20  
FV: 73  
FV: 24  
YP: 44  
Gel: 12/20  
WI: 3.0  
CH: 9.3  
Ct: 43k

5 5 50 500 5K  
100 1K 10K 100K 1000K



99 / 1 / Tr / Tr

Survey:2517.99mMD (1794.5mTVD)  
53.46°inc 263.01°az

CALCILUTITE:(90%) It-med gy,med dk gy i/p,it olv gy i/p,slty,rr disse pyr,tr glauc,tr foss frag,sft-frm, loc mod hd,sbblky.

2510

(1795.7)

2520

2530

2540

(1807.7)

2550

Survey:2546.97mMD (1811.9mTVD)  
52.75°inc 262.81°az

CALCILUTITE:(90%) It-med gy,med dk gy i/p,it olv gy i/p,slty,rr disse pyr,tr glauc,tr foss frag,sft-frm, loc mod hd,sbblky.

2560

(1819.7)

99 / 1 / Tr / Tr

2570

(1819.7)

Survey:2575.68mMD (1829.0mTVD)  
53.70°inc 262.57°az

CALCILUTITE:(90%) It-med gy,med dk gy i/p,it olv gy i/p,slty,rr disse pyr,tr glauc,tr foss frag,sft-frm, loc- mod hd,sbblky.

2580

(1831.6)

2590

2600

(1843.6)

Survey:2604.19mMD (1845.1mTVD)  
52.78°inc 262.57°az

CALCILUTITE:It-med gy,med dk gy i/p,it olv gy i/p,slty,rr disse pyr,tr glauc,tr foss frag,sft-frm, loc mod hd,sbblky.

2610

98 / 1 / 1 / Tr

2620

(1855.6)

WOB:20-40  
TDRPM:120  
MMRPM:177  
SPP:3200  
FLW:610

CALCILUTITE:(Tr%) med gy,olv gy, aren g/t clear i/p,rr disse pyr,tr carb spk,tr lith,frm-mod hd,sbblky-sbffiss i/p.

2630

Survey:2632.63mMD (1863.2mTVD)  
53.53°inc 262.51°az

MW: 9.20

MW: 9-20  
FV: 71  
PV: 24  
YP: 44  
Gel: 12/21  
WI: 3.0  
pH: 9.1  
Cl: 42k

2640  
(1867.5)

2650

2660  
(1879.3)

2670

2680  
(1891.1)

2690

2700  
(1903)

2710

2720  
(1914.8)

2730

2740  
(1926.8)

2750

2760  
(1938.7)

2770

12-09-06

14-09-06

WOB: 20-50  
TDRPM: 120  
MRRPM: 176  
SPP: 3300  
FLW: 610

MW: 9-25  
FV: 70  
PV: 21  
YP: 39  
Gel: 12/20  
WI: 3.0  
pH: 9.1  
Cl: 41k

Survey: 2661.88mMD (1880.4mTVD)  
54.17°inc 262.17°az

98 / 1 / 1 / Tr

Survey: 2690.32mMD (1897.2mTVD)  
53.40°inc 261.96°az

Survey: 2719.04mMD (1914.3mTVD)  
53.76°inc 262.04°az

98 / 1 / 1 / Tr

Survey: 2746.92mMD (1930.9mTVD)  
53.08°inc 261.78°az

98 / 1 / 1 / Tr

BIT #1RR 8 1/2"  
Smith S73PX  
Jets: 6k20  
In : 2768.0m MDRT  
Out : 3477.0  
Run : 709.0m  
Hrs : 29.8  
Cond :

CALCILUTITE:lt-med gy,lt bn gy,  
lt olv gy i/p,sity,tr dissem pyr,  
tr foss frag,tr carb spk,sft frm,  
occ mod hd,sbbkly.

CALCILUTITE:lt-med gy,lt bn gy,  
lt olv gy i/p,sity,tr dissem pyr,  
tr foss frag,tr lith,sft frm,  
occ mod hd,sbbkly.

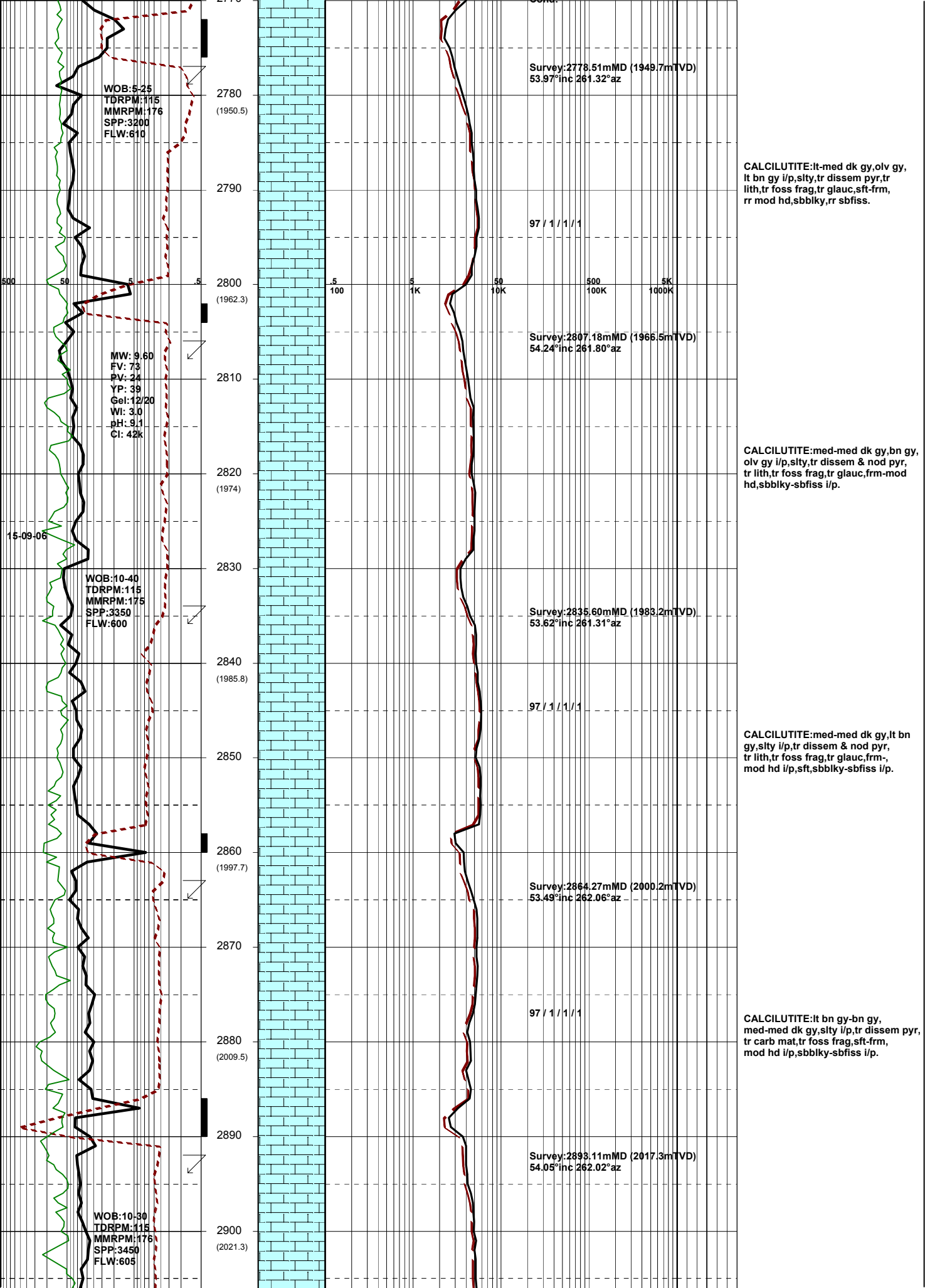
CALCILUTITE:lt-med gy,lt bn gy,  
lt olv gy i/p,sity,tr dissem pyr,  
rr foss frag,tr lith,tr glauc,sft  
frm-mod hd,sbbkly.

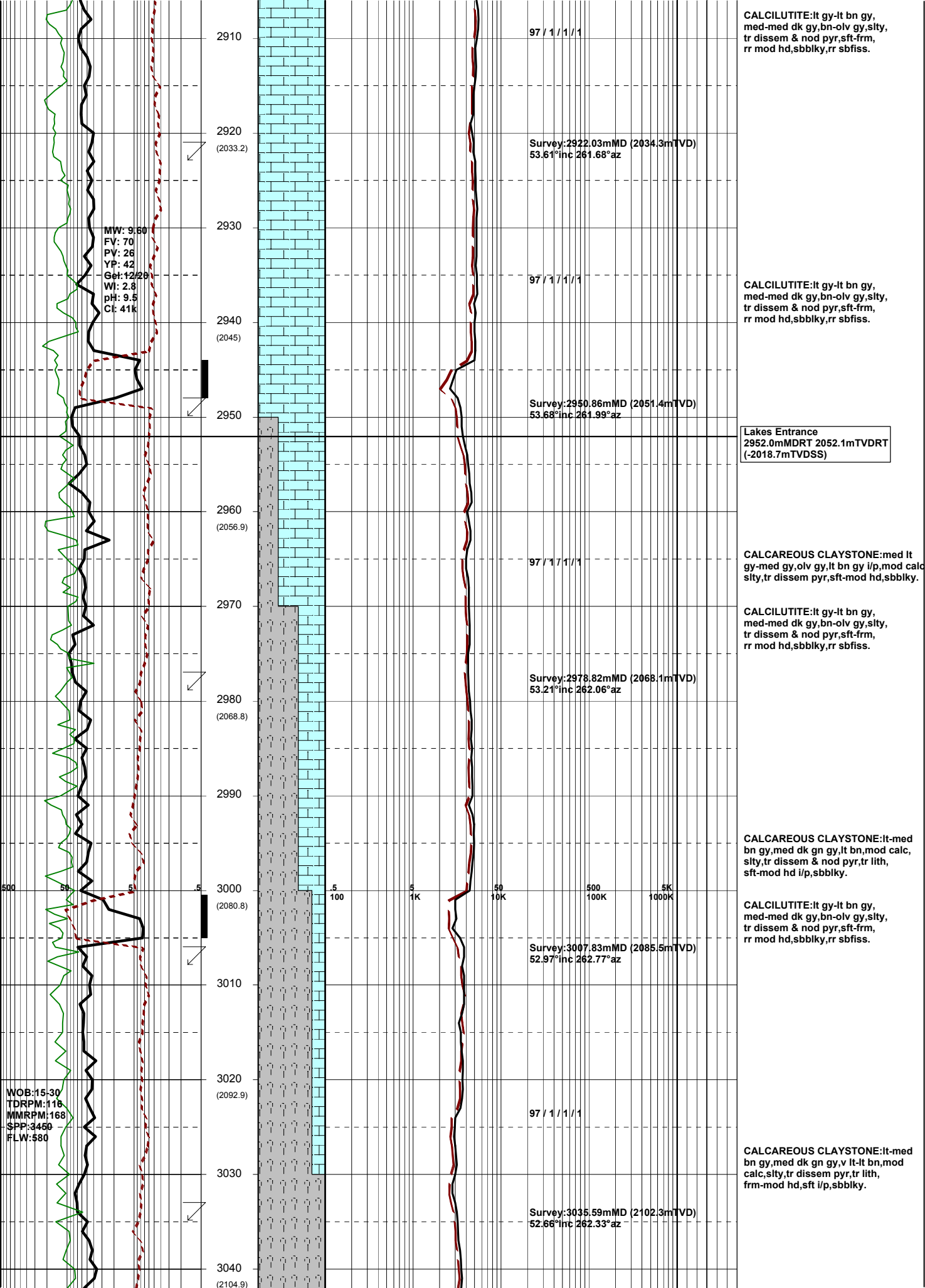
CALCILUTITE:lt-med gy,olv gy,  
lt bn gy i/p,sity i/p,tr dissem & nod  
pyr,tr foss frag,tr glauc,sft frm,  
rr mod hd,sbbkly,rr sbfiss.

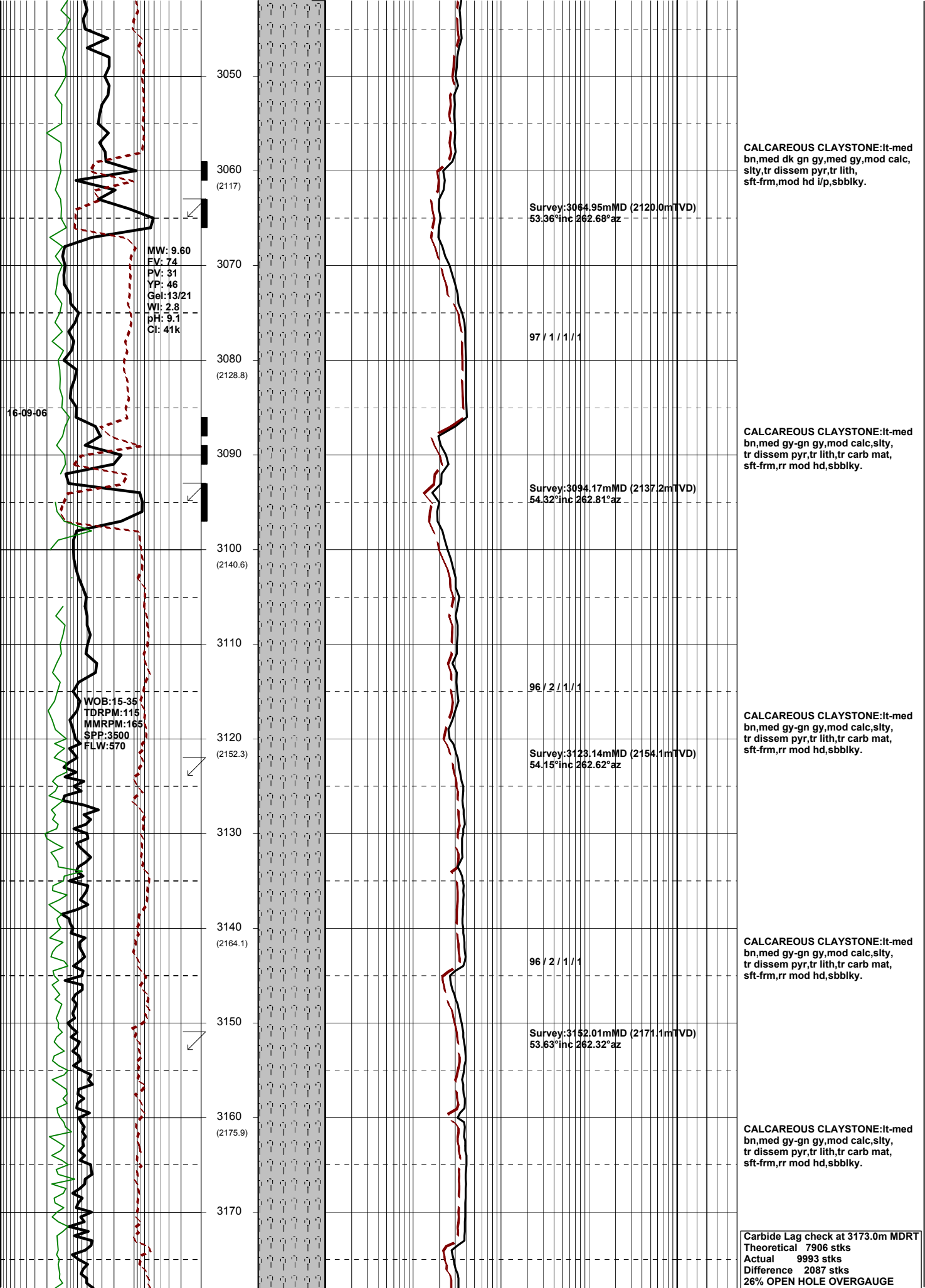
CALCILUTITE:lt-med gy,olv gy,  
lt bn gy i/p,sity i/p,tr dissem & nod  
pyr,tr foss frag,tr glauc,sft frm,  
rr mod hd,sbbkly,rr sbfiss.

PULL OUT TO CHANGE SAVER SUB  
FOR TAPERED 4" / 5" DRILL STRING









3050  
3060 (2117)  
3070  
3080 (2128.8)  
3090  
3100 (2140.6)  
3110  
3120 (2152.3)  
3130  
3140 (2164.1)  
3150  
3160 (2175.9)  
3170

MW: 9.60  
FV: 74  
PV: 31  
YP: 46  
Gel: 13/21  
WI: 2.8  
pH: 9.1  
Cl: 41k

WOB: 15-35  
TDRPM: 115  
MMRPM: 165  
SPP: 3500  
FLW: 570

16-09-06

Survey: 3064.95mMD (2120.0mTVD)  
53.36°inc 262.68°az

97 / 1 / 1 / 1

Survey: 3094.17mMD (2137.2mTVD)  
54.32°inc 262.81°az

96 / 2 / 1 / 1

Survey: 3123.14mMD (2154.1mTVD)  
54.15°inc 262.62°az

96 / 2 / 1 / 1

Survey: 3152.01mMD (2171.1mTVD)  
53.63°inc 262.32°az

**CALCAREOUS CLAYSTONE:**lt-med  
bn,med dk gn gy,med gy,mod calc,  
silty,tr disseminated pyr,tr lith,  
sft-frm,mod hd i/p,sbbkly.

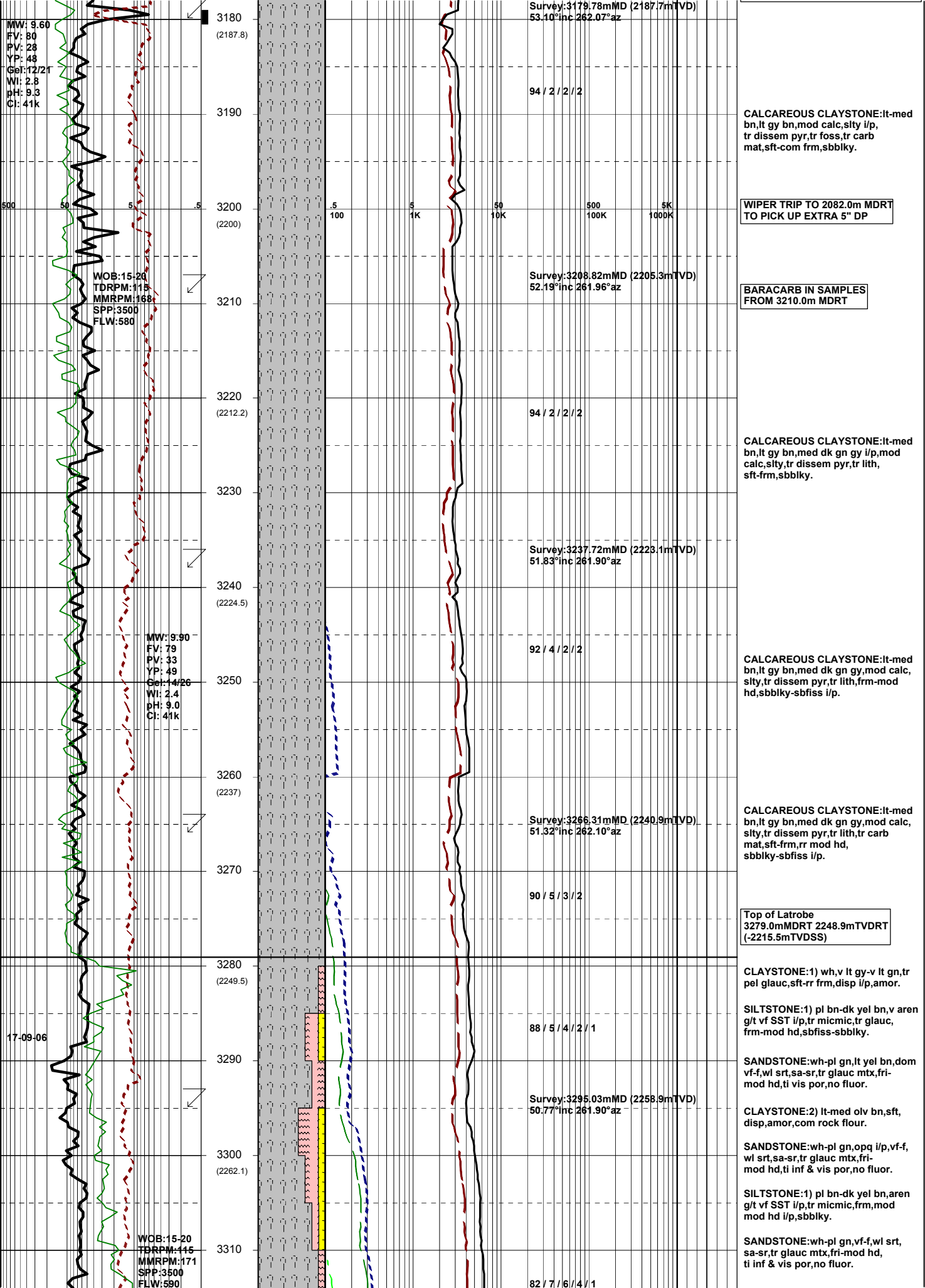
**CALCAREOUS CLAYSTONE:**lt-med  
bn,med gy-gn gy,mod calc,silty,  
tr disseminated pyr,tr lith,tr carb mat,  
sft-frm,rr mod hd,sbbkly.

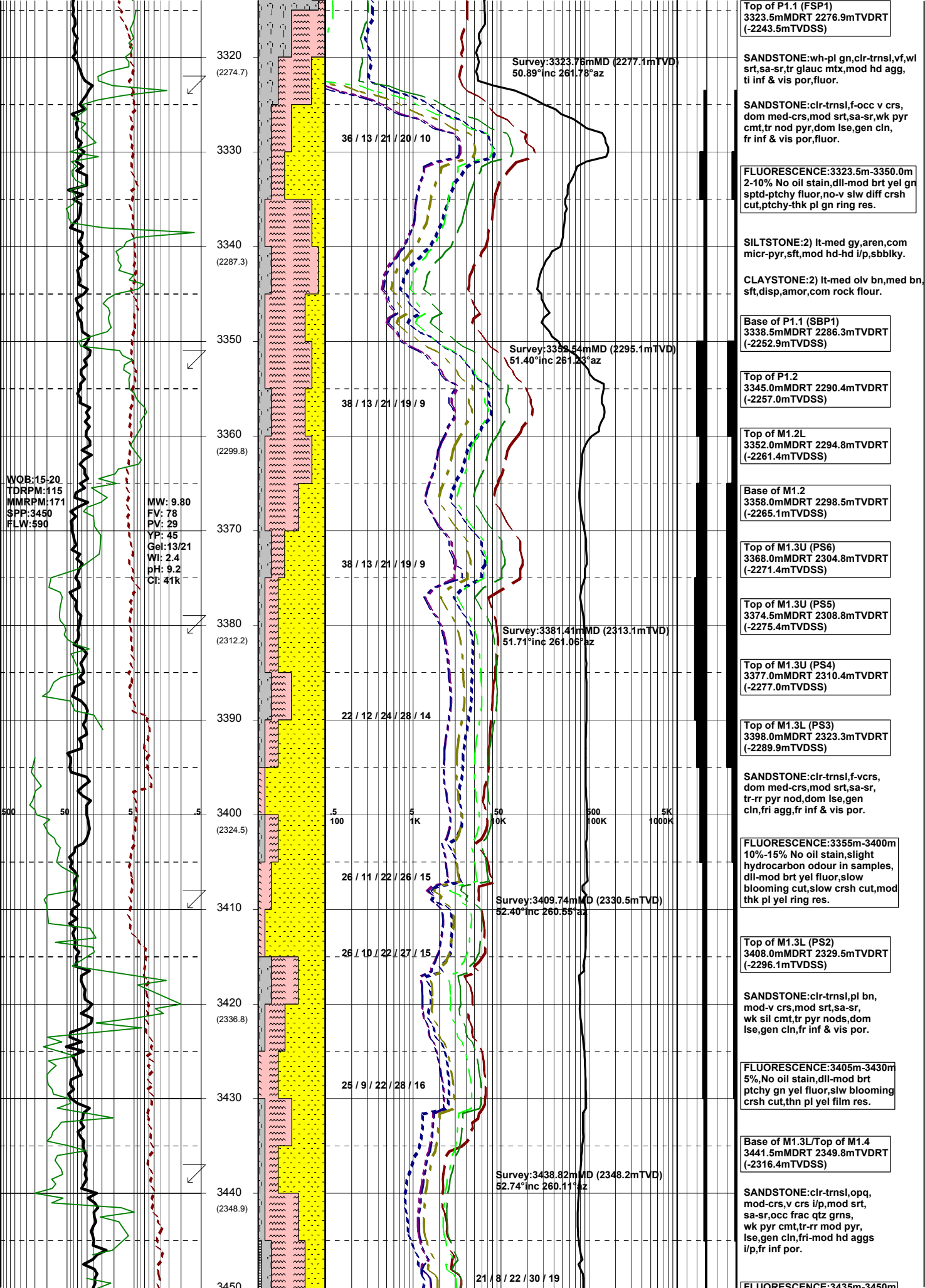
**CALCAREOUS CLAYSTONE:**lt-med  
bn,med gy-gn gy,mod calc,silty,  
tr disseminated pyr,tr lith,tr carb mat,  
sft-frm,rr mod hd,sbbkly.

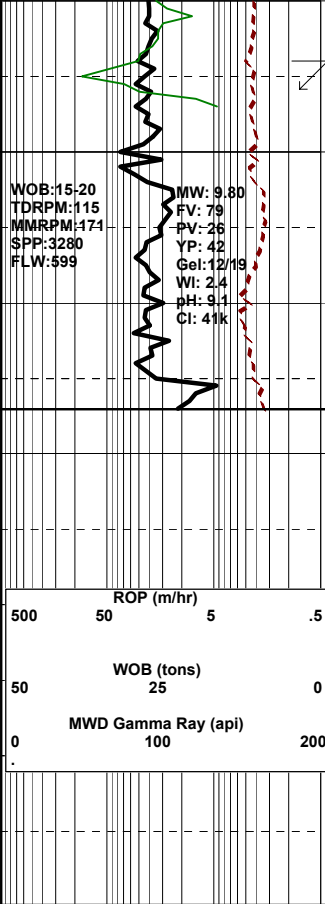
**CALCAREOUS CLAYSTONE:**lt-med  
bn,med gy-gn gy,mod calc,silty,  
tr disseminated pyr,tr lith,tr carb mat,  
sft-frm,rr mod hd,sbbkly.

**CALCAREOUS CLAYSTONE:**lt-med  
bn,med gy-gn gy,mod calc,silty,  
tr disseminated pyr,tr lith,tr carb mat,  
sft-frm,rr mod hd,sbbkly.

Carbide Lag check at 3173.0m MDRT  
Theoretical 7906 stks  
Actual 9993 stks  
Difference 2087 stks  
26% OPEN HOLE OVERGAUGE

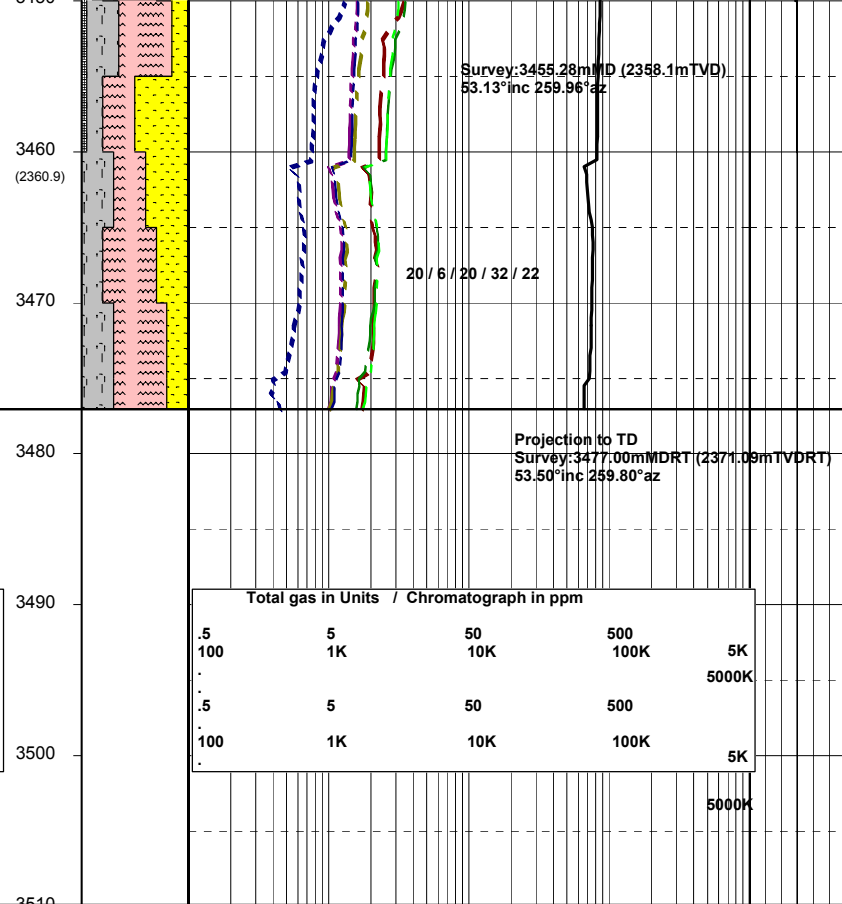






WOB:15-20  
TDRPM:115  
MMRPM:171  
SPP:3280  
FLW:599

MW: 9.80  
FV: 79  
PV: 26  
YP: 42  
Gel:12/18  
WI: 2.4  
pH: 9.1  
Cl: 41k



Survey:3455.28m MD (2358.1m TVD)  
53.13° inc 259.96° az

Projection to TD  
Survey:3477.00m MDRT (2371.09m TVDRT)  
53.50° inc 259.80° az

20 / 6 / 20 / 32 / 22

LOG RESISTANCE: 3455m-3458m  
5% decreasing to trace  
dll yel gn fluor, v slw  
blooming crsh cut, th pl  
gn yel ring res.

COAL: dsky bn, ea, frm,  
mod hd, unevn, wdy text,  
sbbkly.

SILTSTONE: (1) 20% pl bn-dk yel bn,  
aren, tr micmic, frm-mod hd, sbbkly,  
(2) 30% lt-med gy, tr micmic,  
frm-mod hd, sbbkly.

CLAYSTONE: 2) lt-med olv bn, med  
bn, non calc, sft, disp, amorph.

WKF-W6A reached Total Depth of  
3477.0m MDRT 2371.1m TVDRT  
(-2337.7m TVDSS) at 12:00 hours  
on 17-09-2006

ROP (m/hr)			
500	50	5	.5
WOB (tons)			
50	25		0
MWD Gamma Ray (api)			
0	100		200

Total gas in Units / Chromatograph in ppm				
.5	5	50	500	5K
100	1K	10K	100K	5000K
.5	5	50	500	
100	1K	10K	100K	5K

5000K

